

SICCUS FX PANEL

MANUFACTURED BY:

Uponor

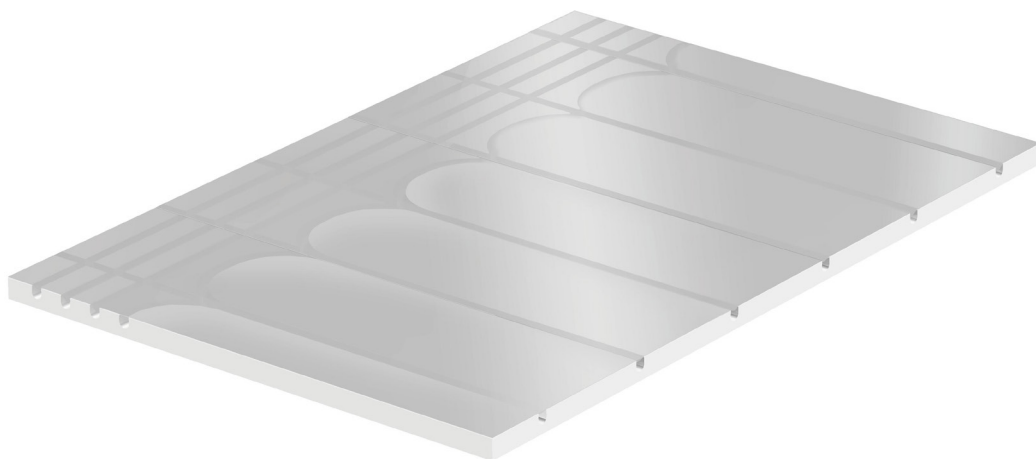
Ideally suited for both new build and renovation projects, the system offers installers a multi-application alternative to traditional floating floor heating constructions.

DETAILS

- 'All in One' panel design
- Pre-formed 16mm pipe grooves
- Bonded heavy duty aluminium foil
- 30mm thick XPS200 panel
- 100% emitter floor coverage area
- Multiple floor applications
- Dry trade only installation
- Reduced product inventory
- Ideal for renovation and new build projects



HUNT
HEATING®



PEX-A PIPE



MANIFOLD



MEASUREMENTS

1200 X 800 X 30 (H x W x D) mm
0.96 m²

MATERIALS

Expanded polystyrene (EPS)



HUNT HEATING
The smart choice.

SHOWROOM

11 Fiveways Boulevard
Keysborough
VIC 3173

PHONE 1300 00 1800

FAX (+613) 9798 5133

enquiries@huntheat.com.au

www.huntheat.com.au



Technical Data

Insulating panel	
Product code	1086316
Panel dimensions	1200 x 800 x 30 mm
Panel surface	0.96 m ²
Total thickness	30 mm
Compatible pipe diameter	16 mm
Insulating material	Expanded polystyrene (EPS)
Foil thickness	0.1 mm
Compressive strength (10% max deflection)	kPa200 to EN826
Thermal conductance	0.033W/mK
Fire class to EN13501-1	Class E
Approvals	CE marked to EN13163

